



# SITE SAFETY ORIENTATION

Atlantic Region

<b>Prepared By:</b>	B.Harris 3.8.17	<b>Reviewed By:</b>	D. Melendez 7.8.17	<b>Approved By:</b>	M. Brodie 7.8.17
---------------------	--------------------	---------------------	-----------------------	---------------------	---------------------



# PROJECT SAFETY PROGRAM MEETING

SE Region



Language Barriers

Literacy Issues

Proof of Training

Drug / Alcohol Screenings

*building solutions*



**OSHA 29 CFR 1926/1910 – General Duty Clause**  
**Bermuda Occupational Safety & Health Regulations 2009**  
**Bermuda Contract Provisions**  
**Drug/Alcohol Free Workplace**  
**Exhibit I Safety Submittals Prior to Start**  
**START Training for all Site Supervision**  
**Safety Meeting Attendance Mandatory**  
**Orientations for all Site Workers 1<sup>st</sup> Day On Site**  
**Daily Crew Stretch & Huddle Led by Foremen**



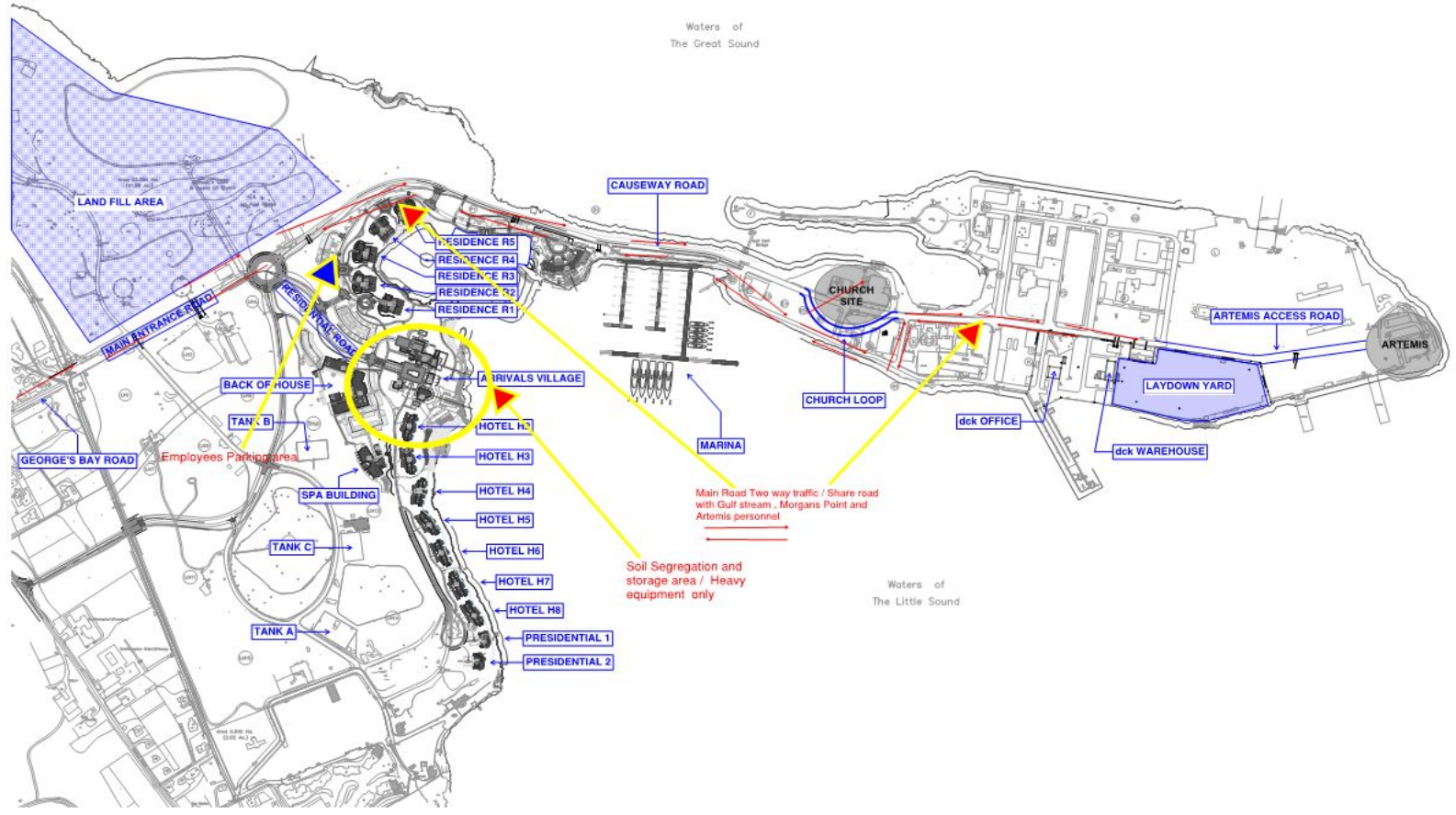
**PROJECT SAFETY PROGRAM MEETING**

SE Region



# PROJECT SAFETY PROGRAM MEETING

SE Region





# World Class Safety Program

- **General Superintendants**

- Residence - John Cozza
- Hotels - H McMillian
- Back of House - Jerry Hill
- Arrivals - Darren Thompson



**PROJECT SAFETY PROGRAM MEETING**

SE Region

*building solutions*

# World Class Safety Program

Project Safety is  
Our **FIRST** Priority



- Culture Expectations
- Train Workforce
- Everyone Is Accountable & Responsible for Safety
- Provide, Use & Maintain PPE
- Activity Hazard Analysis (No AHA/No Work)
- Plan Safety Into Work Process & Communicate
- Supervision Accountable for Crew Performance
- Report/Correct Unsafe Conditions Immediately
- Do Not Disable Safety Devices

**PROJECT SAFETY PROGRAM MEETING**

SE Region



# World Class Safety Program

## Expectations for Safety **ZERO INCIDENTS**

- Disciplinary Program
- Red Flag Company Notice
- 3 Strike Worker Program
- No Tolerance Program (Fall Protection; Work Place violence; Substance Abuse)
- Positive Recognition Program
- Visitor Control Policy – Sign-In at Office
- No music radios/ No smoking Policy
- Public Exposure Protection
- Mechanized Equipment
- Hot Work Permits and Fire Watch Requirements



**PROJECT SAFETY PROGRAM MEETING**

SE Region

*building solutions*

# World Class Safety Program

*One Day at a Time...*

*Focus on Today, Plan for Tomorrow.*



- **Emergency Signal – 5 Blasts of Horn/Verbal**
- Emergency Meeting Location(s)/ Exit Locations
- First Aid & Blood Clean Up Kit Locations
- Nearest Medical Clinic/Hospital/Emergency #
- Fire Extinguisher Locations
- Crane Basket Location
- SDS Location
- Spill Kit Location
- Emergency Drill Requirements

**PROJECT SAFETY PROGRAM MEETING**

SE Region





# World Class Safety Program

*One Day at a Time...*

- Report All Injuries, accidents & Near Miss Incidents Immediately to **Bermuda** Safety
- Failure to Report
- OSHA Inspection Notification Procedure



**PROJECT SAFETY PROGRAM MEETING**

SE Region

*building solutions*

# World Class Safety Program



## Mandatory Personal Protective Equipment (P.P.E.)

- Hard Hats (ANSI /CSA/BSEN)
- Safety Glasses
- High Visibility Clothing
- Substantial Long Pants and Shirt w/Sleeves
- Work Boots (Steel Toe i.e. No Tennis Shoes)

## Task Specific P.P.E.:

- Hand Protection (Glove Use Encouraged)
- Double Eye Protection – Projectile Work Face Shields
- Hearing Protection on Person (3' Rule; Proper Use)
- Respiratory Protection
- Medical Clearance/Fit Test/Training

PROJECT SAFETY PROGRAM MEETING

SE Region



*building solutions*

# World Class Safety Program

## Certifications:

- CPR & Standard First Aid
- Work Zone Flagger
- Forklift Operator
- Vehicles –Licensed Drivers; Commercial DL
- Crane Operator Cert. & Physical (Company/NCCCO)
- Mechanized Equipment & Machinery Certifications
- Competent Operator of Mechanized Equipment
- Powder Actuated Tools & Laser Levels
- Competent Person Requirements (Confined Space, Scaffolding, Fall Protection, Rigging, Trenching, Aerial Lifts, etc.)



**PROJECT SAFETY PROGRAM MEETING**

SE Region

*building solutions*

# World Class Safety Program



- Fall Protection
- 6' High - 100%/Fall Distance/Anchor Points
- Ladders (Type, Securing, Safe Use)
- Falling Object Protection (Hole Covers/Toe Boards)



**PROJECT SAFETY PROGRAM MEETING**

SE Region

*building solutions*



# World Class Safety Program

## Electrical:

- Tool & Cord Protection & Inspection & Repair
- Power Line Awareness & Verification
- Lock Out Tag Out Requirements
- GFCI Requirements
- Temporary Power Cords (heavy or extra heavy construction grade)



PROJECT SAFETY PROGRAM MEETING

SE Region

*building solutions*

# World Class Safety Program

## Trenching & Excavation:



- Inspection Prior to Entry/Warning Devices & Types
- Protective Systems at 5'
- Access at 4'
- Proper Material Handling & Storage



PROJECT SAFETY PROGRAM MEETING

SE Region

*building solutions*



# Safety Initiatives

Caught Between Hazards



Proper Material Handling & Storage



# PROJECT SAFETY PROGRAM MEETING

---

SE Region

Housekeeping (cleanliness & orderliness)

Mandatory Daily Clean Up – Clean As You Go

**Silica (dust control)**

---







# Project Specific Safety Challenges

Private Health Matters ( Confidential)

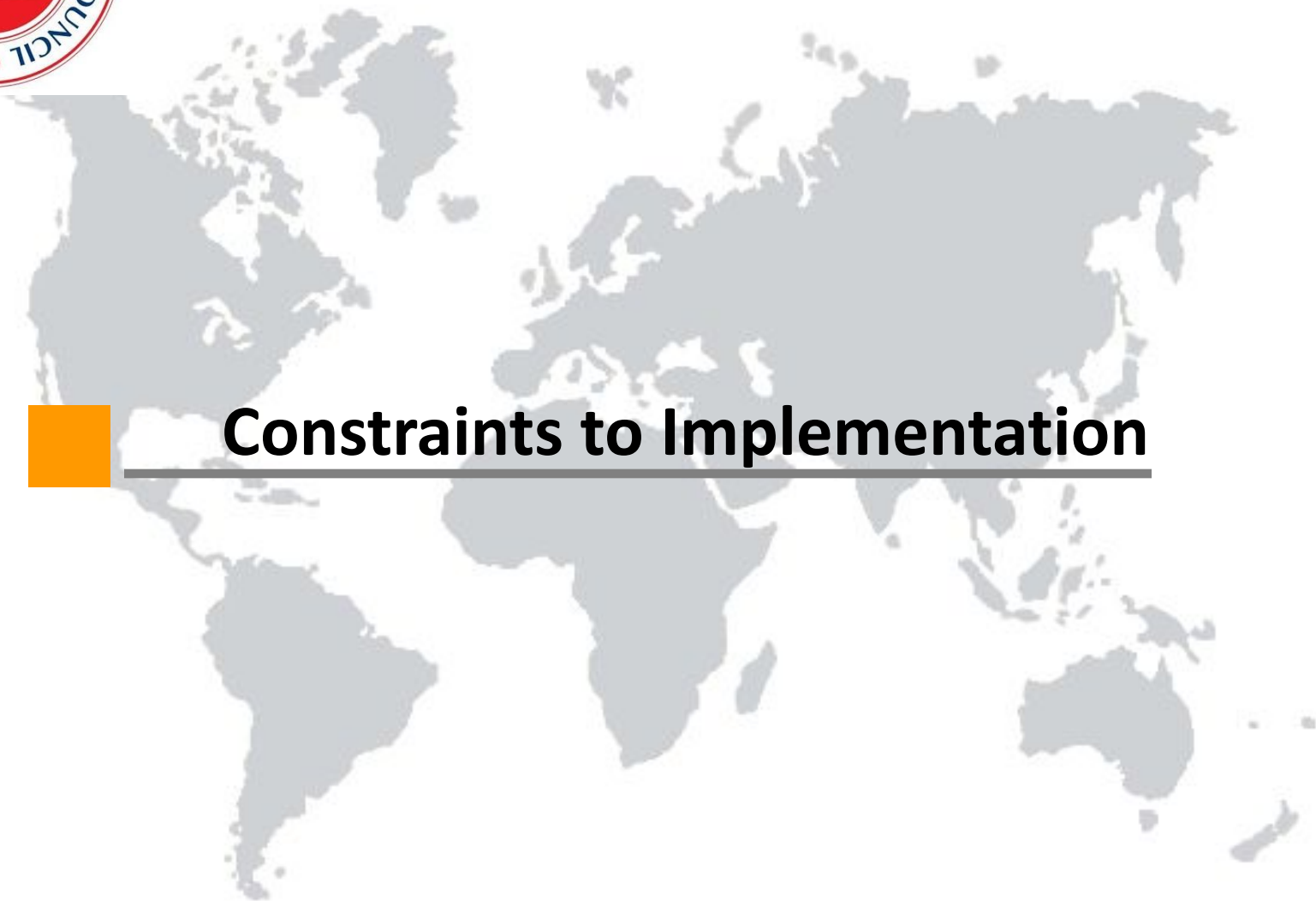
Literacy Problems (Confidential)

Any Questions

# Project Specific Safety Challenges

- **Discuss with your members of your group current activity(s) about to start on your project. Pick and present three activities with their safety challenges to the rest of the group. Use your forms in your handouts.**
- **Pick one activity of your group's three activities. Provide a detailed list of needed safety actions for this activity. Present your findings to the rest of the group. Use your flipcharts.**





# Constraints to Implementation



# PROJECT SAFETY PROGRAM MEETING

---

SE Region



## Next Steps

---





Thanks & Safe Travels!

# Operational Excellence

## Business Process Workflow

Five Step Process:

Get the Work

Do the Work

Opportunity Management

Work Acquisition Process

Procurement/ Project Buy-Out

Project Execution

Project Close-out

New & Repeat Business

### Checkpoint 1 :

Success Criteria: Increase Growth; Company Differentiation

### Checkpoint 2:

Success Criteria: Increase Margins – select projects that improve margin opportunities

### Checkpoint 3 :

Success Criteria: Improve Margin by 20%

### Checkpoint 4 :

Success Criteria:  
0 LTA's  
100% Outstanding Customer Satisfaction  
Improve Schedule by 20%  
Improve Cash Flow by 20%  
Improve Margin by 20%

### Checkpoint 5 :

Success Criteria: Practice Compliance & Improvement

## Organizational Best Practices

### Opportunity Management

- Market Analysis
- Pipeline Management
- Opportunity Capture
- Opportunity Management
- Business Evaluation

### Work Acquisition

- Client Management
- Go / No-Go
- Capture Team
- Proposal Development
- Estimating
- Scheduling

### Procurement/ Project Buy-Out

- Subcontractor Prequal
- Buy-Out Planning
- Sub Insurance Req.
- Sub Bond Req.
- WBS
- Project Start-up
- Design-Build

### Project Execution

- Safety Management
- Change Management
- Cost Reporting
- Document Control
- PMR
- Cash Flow
- Quality Control

### Project Close-Out

- Close-out
- Punch-List
- Start-up & Commissioning

PROJECT SAFETY PROGRAM MEETING

SE Region

building solutions

