A person wearing a yellow hard hat and a grey shirt is adjusting a wooden beam on a construction site. The background shows a complex network of steel beams and cables. The text "OCCUPATIONAL SAFETY AND HEALTH REGULATIONS 2009" is overlaid in white, with a vertical line to its left.

OCCUPATIONAL  
SAFETY AND  
HEALTH  
REGULATIONS 2009



# Occupational Safety And Health Regulation 2009

- **Two Main Regulation**

- Occupational Safety and Health 2009
- Occupational Safety and Health Ticketing Regulation 2012

# Why do companies need OS&H Regulations



Financial



Damage to Reputation



Legal



# Occupational Safety and Health Offences & Penalties

\$20,000 and/or 1 year (1<sup>st</sup> offense)  
\$40,000 and/or 2 years (2<sup>nd</sup> offense)  
Plus additional \$4000 daily fines

**Section 21 OS&H Act**  
**In addition:**

**Occupational Safety and Health  
Ticketing Regulations 2012 (\$500)**



Most Important Reason Why

Not everyone *DIES*  
in workplace incidents.





# Incident and Accident Statistics

What is the working population in Bermuda ?

**39,000 to 40,000**

How many accidents were reported to OS&H ? in 2016 ?

**Estimated 380**





Parts of the  
Occupational  
Health and  
Safety  
Regulation  
2009

1. PART 1: GENERAL
2. PART 2: SAFETY AND HEALTH COMMITTEES AND REPRESENTATIVES
3. PART 3: INVESTIGATION AND REPORTING
4. PART 4: BUILDING SAFETY
5. PART 5: ELEVATING DEVICES
6. PART 6: CONFINED SPACES
7. PART 7: ELECTRICAL SAFETY
8. PART 8: FIRE SAFETY AND EMERGENCY
9. PART 9: FIRST AID
10. PART 10: WORK ENVIRONMENT
11. PART 11: MACHINERY AND TOOLS
12. PART 15: MATERIALS HANDLING EQUIPMENT
13. PART 16: PROTECTIVE CLOTHING AND EQUIPMENT

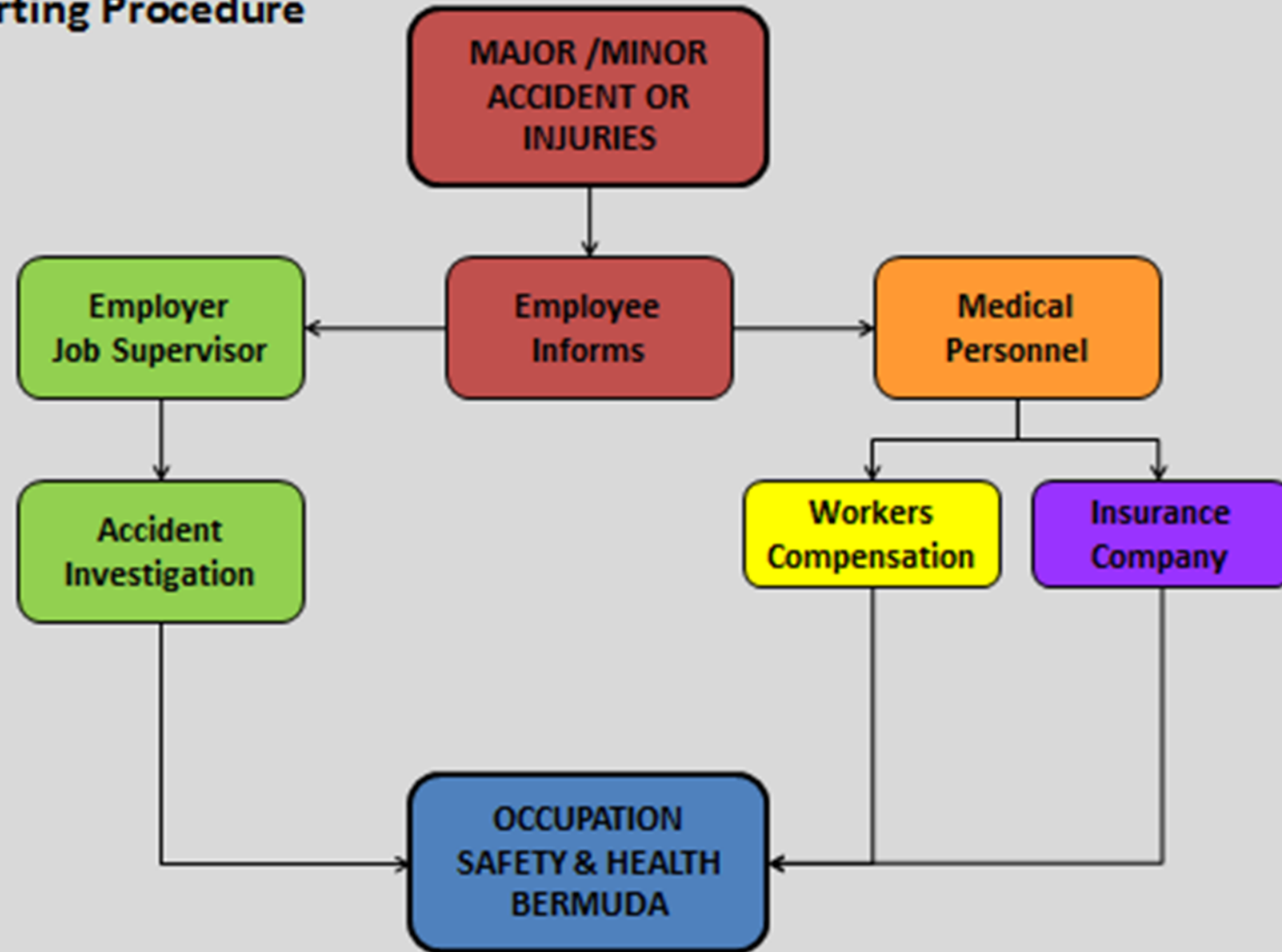


## Occupational Safety and Health Regulations (Sec 23)

- **Employees** must report all accidents or dangerous occurrences to their supervisor or employer immediately.
- **Each Employer** shall notify the Health and Safety Officer by telephone, fax or email of any accident or dangerous occurrence at their place of employment within 24 hours.
- In addition to individual accident reporting, **Employers** must file **Form OSHR 30** by March 1<sup>st</sup> of each year reporting all occupational accidents and illnesses in workplace for the previous year.



## Reporting Procedure



# Contact Information

Yuri Lightbourne  
GLOBAL ENVIRONMENT  
Management

Email: [yuri@globalenvironment.com](mailto:yuri@globalenvironment.com)

Phone: (441) 591-4734

Website: [www.globalenvironment.com](http://www.globalenvironment.com)

